

KU BAND HORN ANTENNA

OVERVIEW

The Ku band horn antenna offers excellent RF performance over a wide frequency bandwidth including a constant and symmetrical beam pattern, achieved by multiple corrugated rings. It is a compact design with low mass.

This feed horn can be used alone or as a feed to the reflector type antenna. It is often used in conjunction with a polarizer (Similar to TAC_1933_K/Ka Band Polarizer but in Ku frequency band) and OMT (TAC_1930_Ku Band OMT) in telecom system.

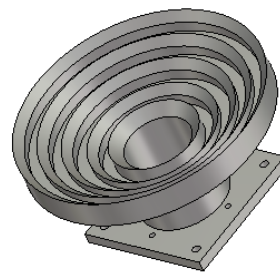
KEY FEATURES

- Ku-band horn antenna
- Compact and multiple corrugated-ring design
- Symmetrical radiation beams
- Circular or linear polarizations
- Low return loss
- Low insertion loss
- Low PIM design
- Low risk multipactions design

CONTACT US

Info@TechAppConsultants.com
www.TechAppConsultants.com

DESIGN AND PROTOTYPE UNIT



SPECIFICATIONS [1]

Parameter	Specification	Note
Frequency (GHz)	10.50 -14.50	
Gain (dBi)	13.5 @ 10.70 GHz	Measured at the waveguide (WG) interface
	12.5 @ 14.50 GHz	
Beamwidth (°)	40.0° @ 10.70 GHz	3dB beamwidth
	45.0° @ 14.50 GHz	
Polarization	LP or CP	
Return loss (dB)	-20	Measured at WG interface
RF interface	Circular waveguide	Other interfaces available
PIM	Low	Low PIM design
Multipaction	Low	Low risk multipaction design
Dimension (mm)	75x75x60	Including the WG flange
Mass (g)	< 150	

[1] These are the typical specifications. There is a range of designs with different dimensions, gains and operating frequencies to choose from to meet different applications and requirements

IT DOES MORE. IT COSTS LESS. ANTENNAS MADE FOR YOU.

(Figures quoted are for information only and subjected to change. All right reserved.)